

RemoteView WOL Configuration Guide

- [1] Configuring motherboard for WOL
- [2] Configuring LAN card for WOL



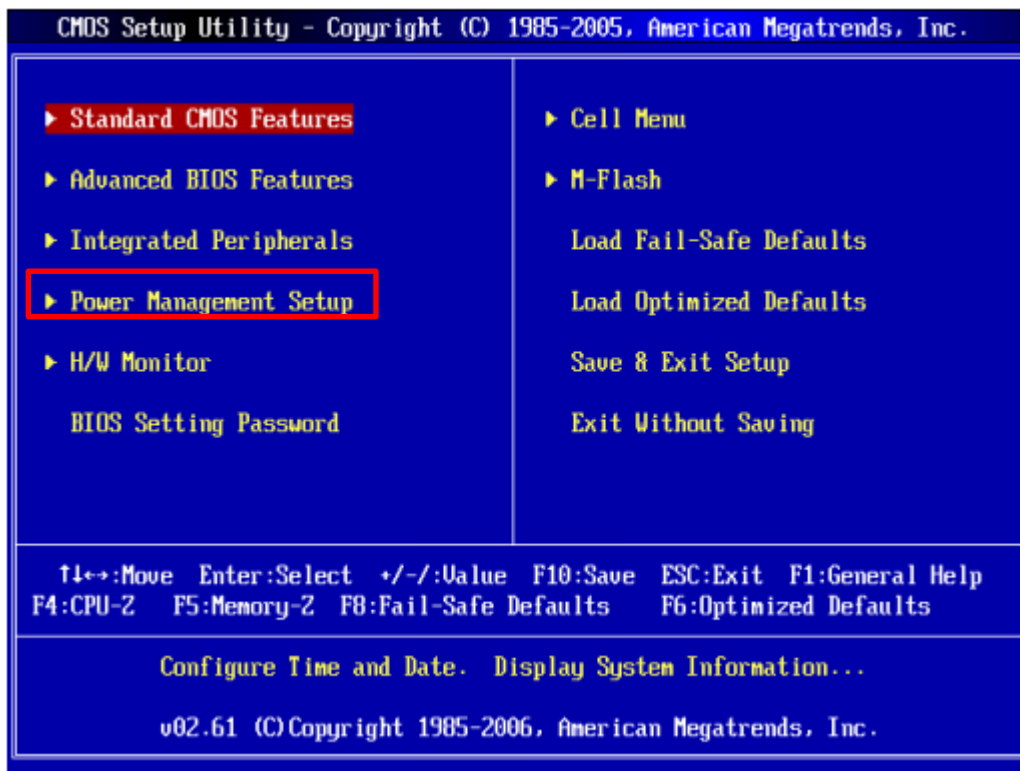
[1] Configuring motherboard for WOL

To use WOL, your PC's motherboard must support WOL and configured properly. Follow the instruction below.

Turn on the PC and press the designated key (Del, F2, etc.) to enter the CMOS/BIOS setup screen.

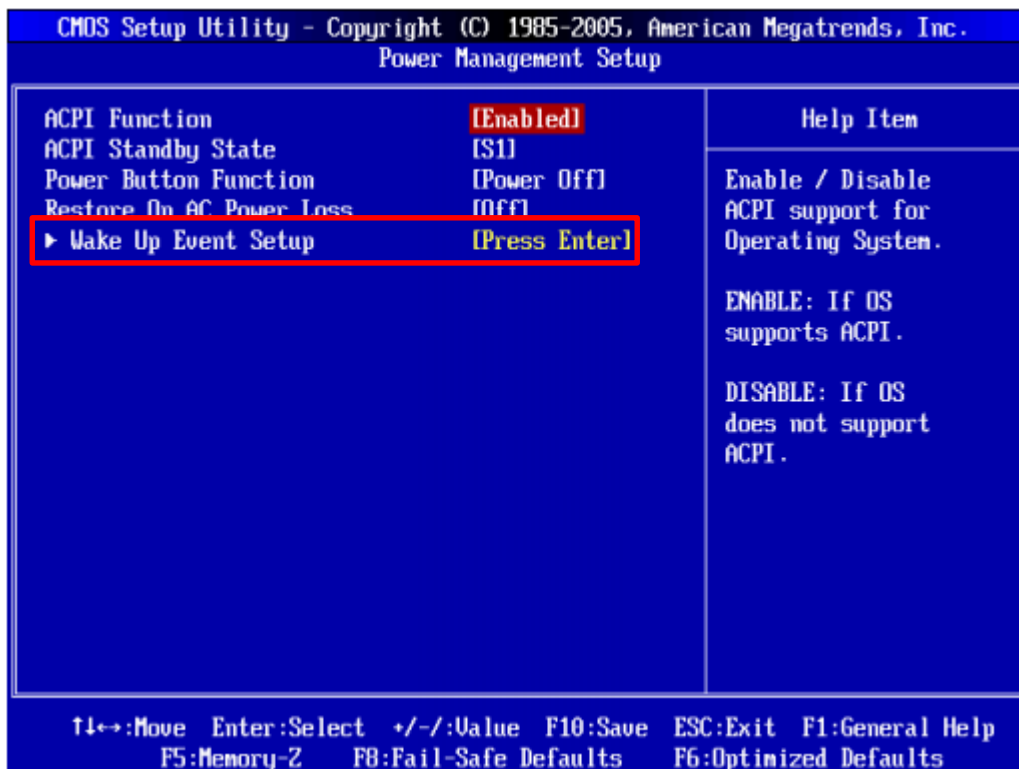
- ▶ Commonly 'delete' key is used to access the CMOS/BIOS setup screen, but depending on the manufacturer, F1 or F2 are also used.
- ▶ After pressing the right key, CMOS/BIOS setup screen will be presented (usually blue background with white text).

Use the arrow keys to navigate and select 'Power Management Setup'. Press enter.



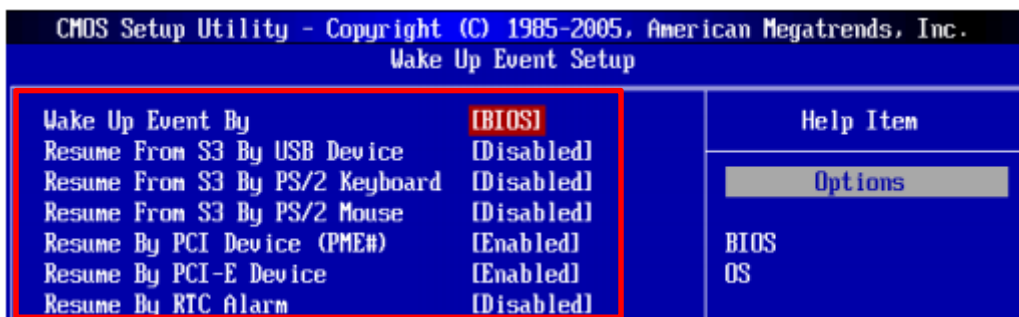
[BIOS screen for American Megatrends,Inc.]

Select 'Wake Up Event Setup'. Press enter.



Make sure that 'Wake Up Event Setup' is enabled.

- Resume By PCI Device
- Resume By PCI-E Device



* Name of the option might be different depending on the manufacturer. Refer to the list below and set the option to [Enable].

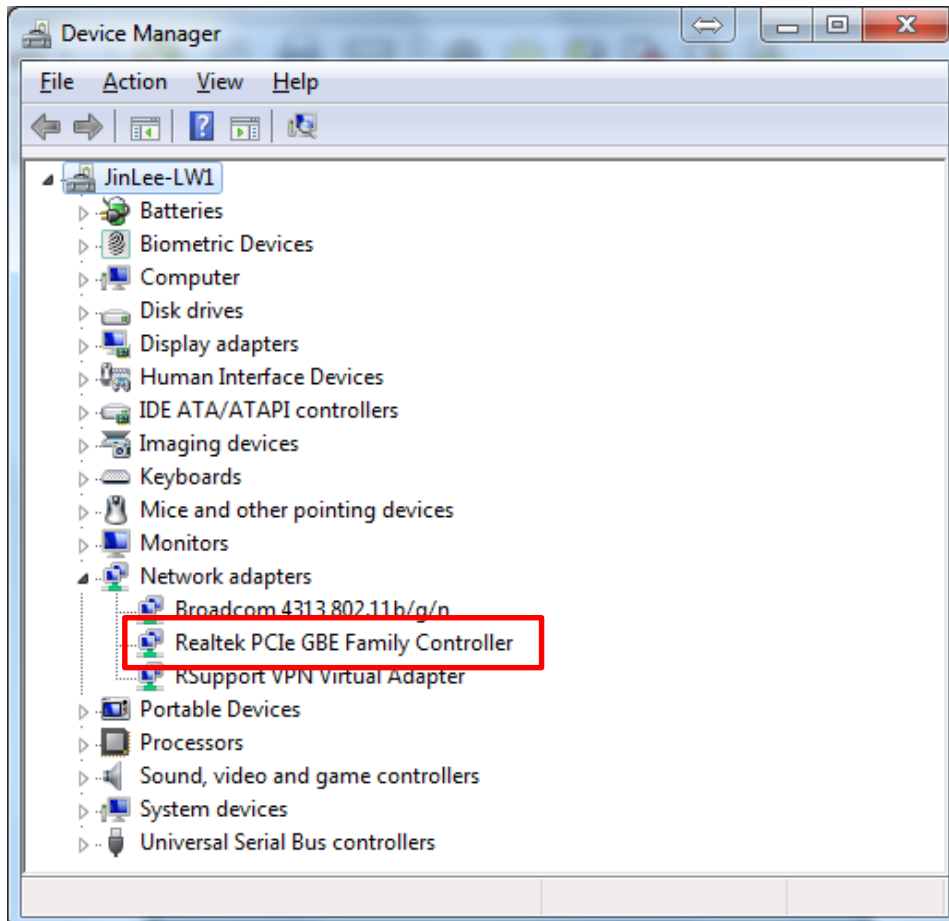
WOL related configuration menu	WOL related item
• [Power Management Setup]	• [WOL]
• [Power] - [APM onfiguration]	• [Wake On LAN]
• [Advanced] - [APM]	• [Remote Wakeup]
• [Power Management Event]	• [PME Event Wake Up]
	• [Power On by PCI Device]
	• [Power On By PCIE Device]

* Refer to the manufacturer’s user guide for more details.

[2] Configuring LAN card for WOL

To use WOL, your PC's LAN card must support WOL and configured properly. Follow the instruction below.

Go to Start > Control Panel > Device Manager > double click on the LAN device under network adapter.



Under "Advanced" tab, set the WOL related options as following:

Wake on Magic Packet – Enabled

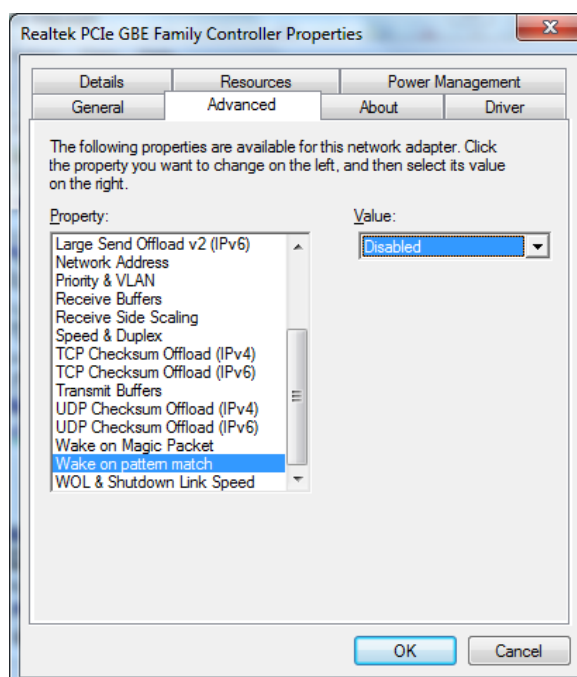
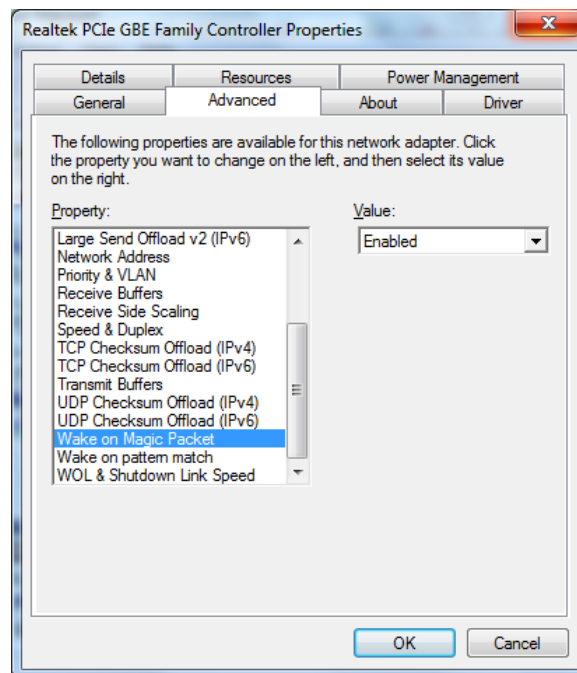
Wake on pattern match – Disabled

► Item name might be different depending on the LAN card.

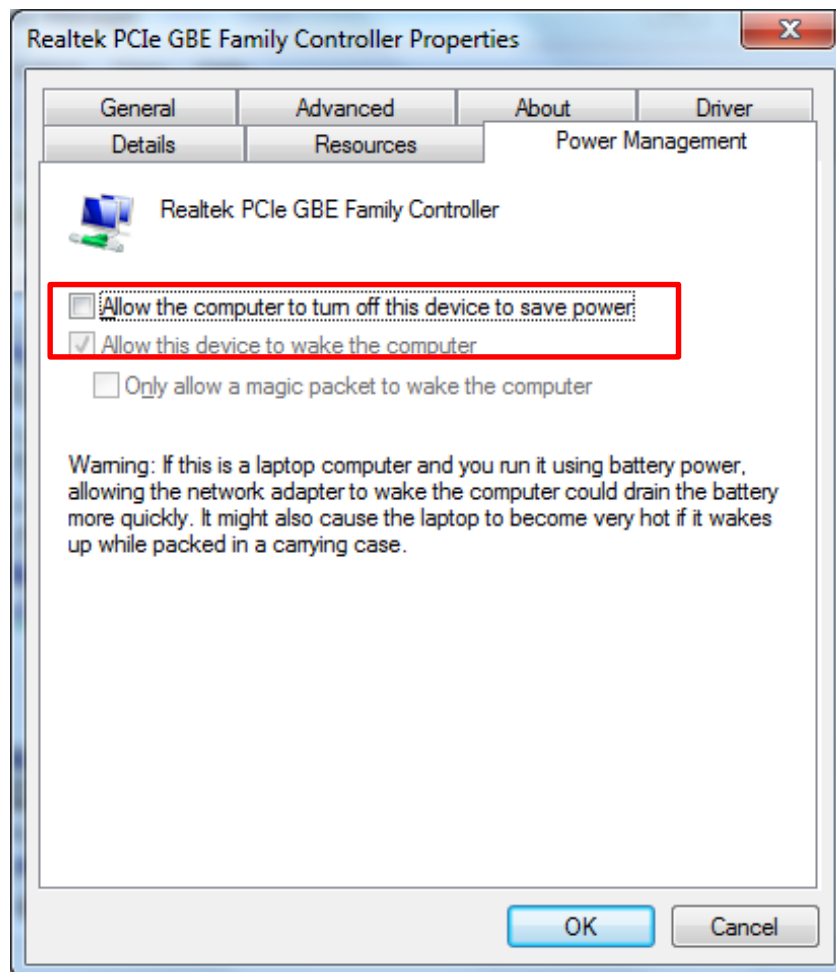
► If WOL related feature is not available:

- Update the LAN card driver with the latest version.

- If the WOL item is not available even after updating the driver, then the LAN card does not support WOL feature. Please, replace or add a LAN card with WOL support.



Under 'Power Management' tab, uncheck the option 'Allow the computer to turn off this device to save power'



* Option name might be different depending on the LAN card. Check with the manufacturer for more details.

RSUPPORT *Wherever possible*

For more information about RSUPPORT, please visit
<http://www.rsupport.com>

Korea :

(138-724) 서울시 송파구 방이동 45번지 한미타워
15층, 16층
전 화 : +82-70-7011-3900
팩 스 : +82-2-479-4429
기술문의 : support.kr@rsupport.com
구매문의 : sales.kr@rsupport.com
기타문의 : info.kr@rsupport.com

Japan :

〒100-0001 東京都港区虎ノ門1-2-20
第3虎の門電気ビル
TEL : +81-3-3539-5761
FAX : +81-3-3539-5762
お問い合わせ : support.jp@rsupport.com
Sales : sales.jp@rsupport.com
Info : info.jp@rsupport.com

USA :

333 Sylvan Ave. Suite 110
Englewood Cliffs, NJ 07632
Phone : +1-888-348-6330
Fax : +1-888-348-6340
Tech : support.us@rsupport.com
Sales : sales.us@rsupport.com
Info : info.us@rsupport.com

China :

北京市朝阳区东三环北路丙2号
天元港中心B座1005室
联系电话 +86-10-8256-1810
传真号码 +86-10-8441-7505
技术咨询 support.cn@rsupport.com
销售咨询 sales.cn@rsupport.com
其他咨询 info.cn@rsupport.com